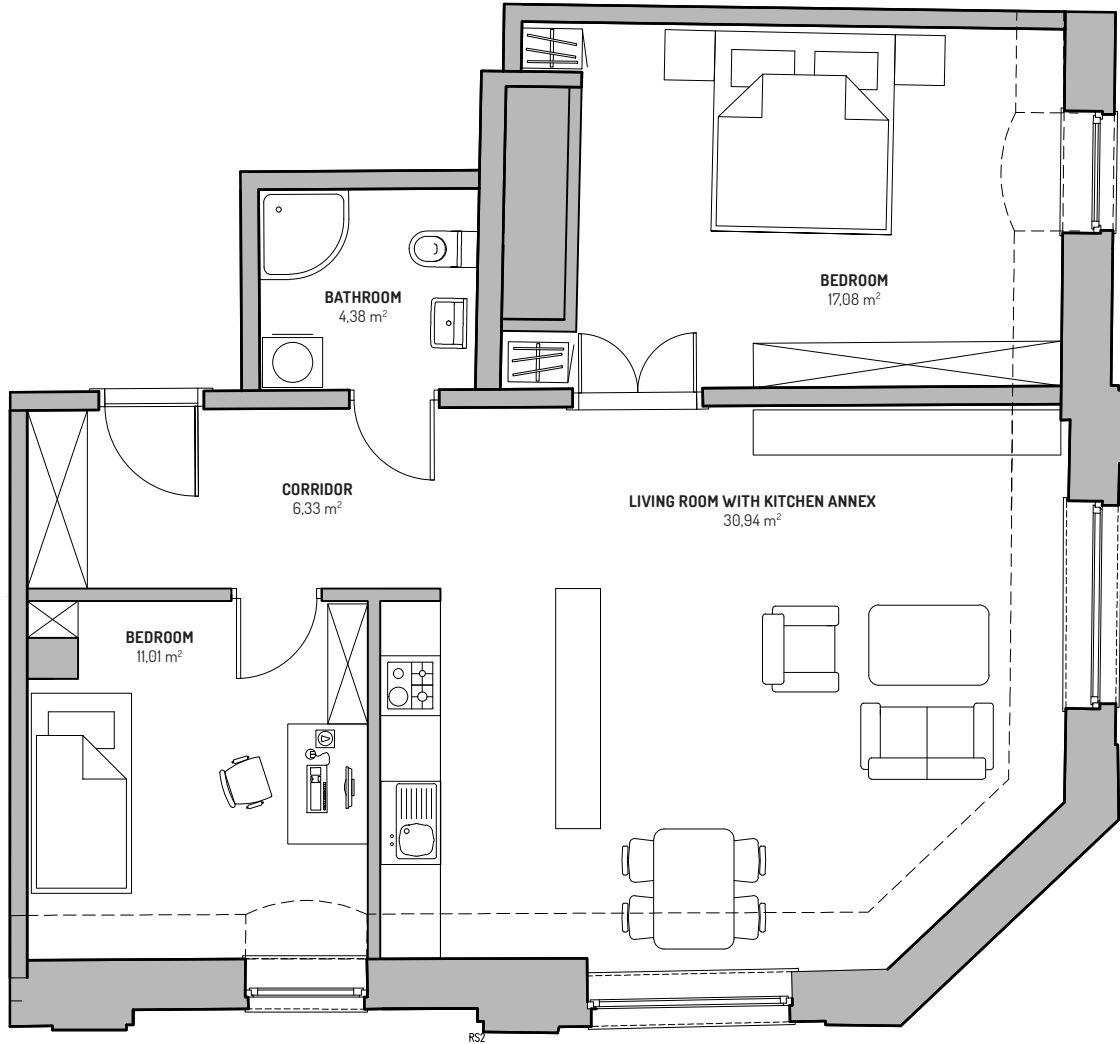


— M12 —

3 room apartment | 4th floor | 69,74 m²



M12 | APARTMENT | 4TH FLOOR

Corridor	6,33 m ²
Bathroom	4,38 m ²
Bedroom	17,08 m ²
Living room with kitchen annex	30,94 m ²
Bedroom	11,01 m ²
Useable area	69,74 m²