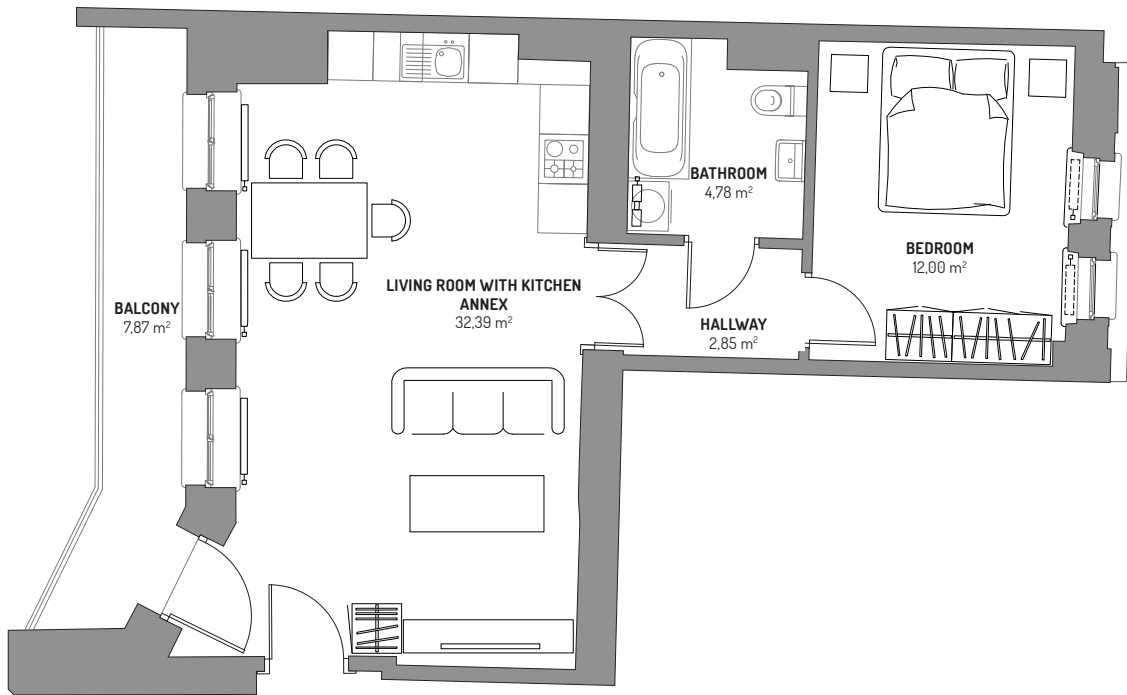


— M6 —

2 room apartment | 3<sup>rd</sup> floor | 52,02 m<sup>2</sup>



M6 | APARTMENT | 3<sup>RD</sup> FLOOR

Living room with kitchen annex	32,39 m <sup>2</sup>
Bedroom	12,00 m <sup>2</sup>
Hallway	2,85 m <sup>2</sup>
Bathroom	4,78 m <sup>2</sup>
Useable area	52,02 m <sup>2</sup>
Balcony	7,87 m <sup>2</sup>